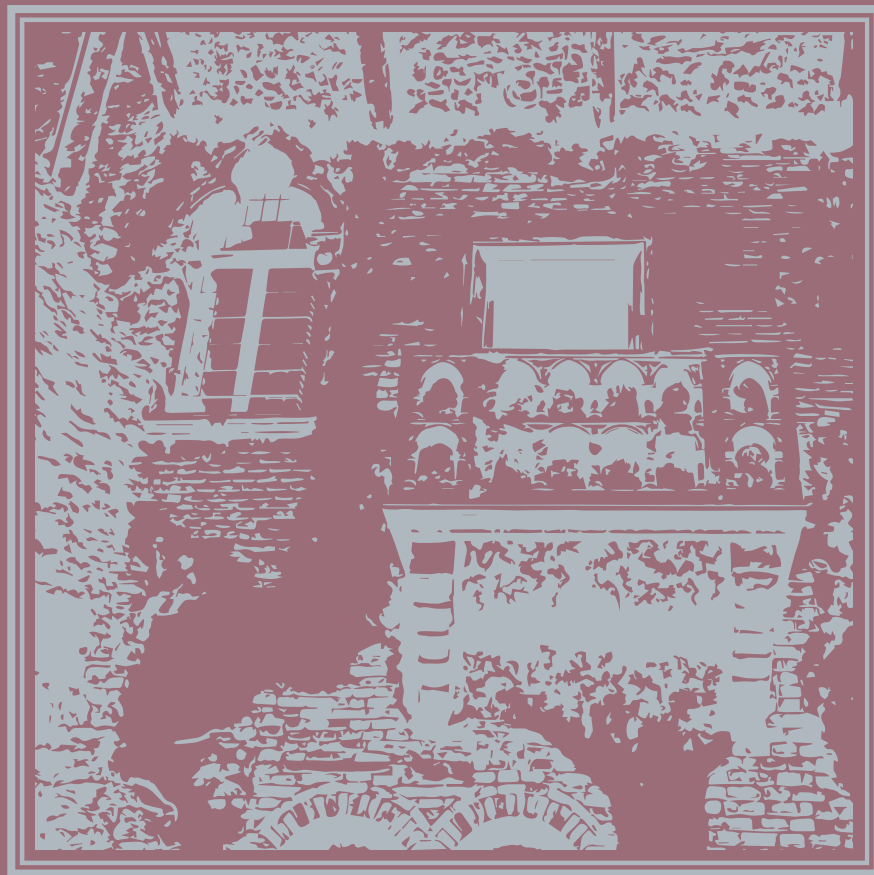


Giorgiocasa[®]

di Mozzo



GIULIETTA E ROMEO



www.giorgiocasa.it



Giorgiocasa®
di Mozzo



A statue of Romeo and Juliet in a classical style, with Romeo holding a book and Juliet looking at him. The background is a blurred architectural setting with arches.

Giorgiocasa®
di Mozzo



Giulietta e Romeo

COLLEZIONE DIVANI

Un ricercato design abbinato a pregiati tessuti caratterizzano la collezione, ispirata al mito degli amanti eterni. Divani romantici dal fascino senza tempo.

This exquisite collection — inspired by the story of the famed eternal lovers — features sophisticated design and superior quality fabrics. Romantic sofas of timeless allure .

Beguiling harmony

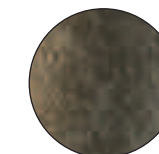
Seducenti armonie

art. S182 K114-K115-K116

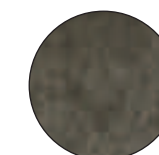
Divano 2 posti - 2 seater sofa
L. 195 P. 105 H. 107

Fabric Samples:

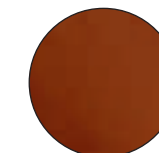
K114



K115



K116



GIULIETTA
E ROMEO

art. S183 K114-K115-K116

Divano 3 posti - 3 seater sofa
L. 258 P. 105 H. 107

art. S181 K114-K115-K116

Poltrona - Armchair
L. 107 P. 105 H. 98

art. S185 K115

Tavolino - Small table
L. 66 P. 66 H. 42

art. S186 K115

Tavolino - Small table
L. 110 P. 67 H. 42



art. S181 K114 - K115 - K116

Poltrona - Armchair
L. 107 P. 105 H. 98

art. S185 K115

Tavolino Small table
L. 66 P. 66 H. 42

art. S186 K115

Tavolino Small table
L. 110 P. 67 H. 42





Giorgiocasa®
di Mozzo

I divani e le poltrone sono impreziosite dal pregevole intaglio traforato a motivo floreale, con finitura foglia argento. I velluti dall'aspetto cangiante rivestono con eleganza anche i tavolini con top in vetro.

The sofas and armchairs feature exquisite openwork carving with floral motifs and silver leaf finishes. Shimmering velvet elegantly clads the furniture, including the coffee table/ottoman with a glass top.

GIULIETTA E ROMEO



La famiglia Mozzo, dal fondatore Giorgio fino al coinvolgimento dei figli Gianluca, Serena, Debora, è da sempre impegnata nella continuazione di una tradizione fatta di sola eccellenza.

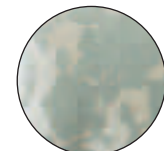
The Mozzo family — from the founder Giorgio down to his children Gianluca, Serena and Debora — has always been devoted to continuing a tradition of sheer excellence.



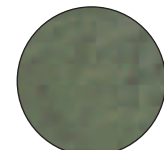
Giorgiocasa®
di Mozzo

Fabric Samples:

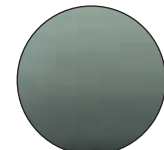
K100



K101



K102



GIULIETTA
E ROMEO

art. S110 K100-K101-K102

Composizione - Composition
L. 324/272 P. 109 H. 104

art. S117 K100 - K101

Tavolino rotondo - Small table
Ø 74 H. 44

art. S115 K100 - K101

Tavolino quadrato - Square small
table
L. 84 P. 84 H. 43

Style excellence

Eccellenza stilistica

art. S110 K100-K101-K102

art. S117 K100 - K101

art. S115 K100 - K101

Composizione - Composition

Tavolino rotondo - Small table

Tavolino quadrato - Square small table

L. 324/272 P. 109 H. 104

Ø 74 H. 44

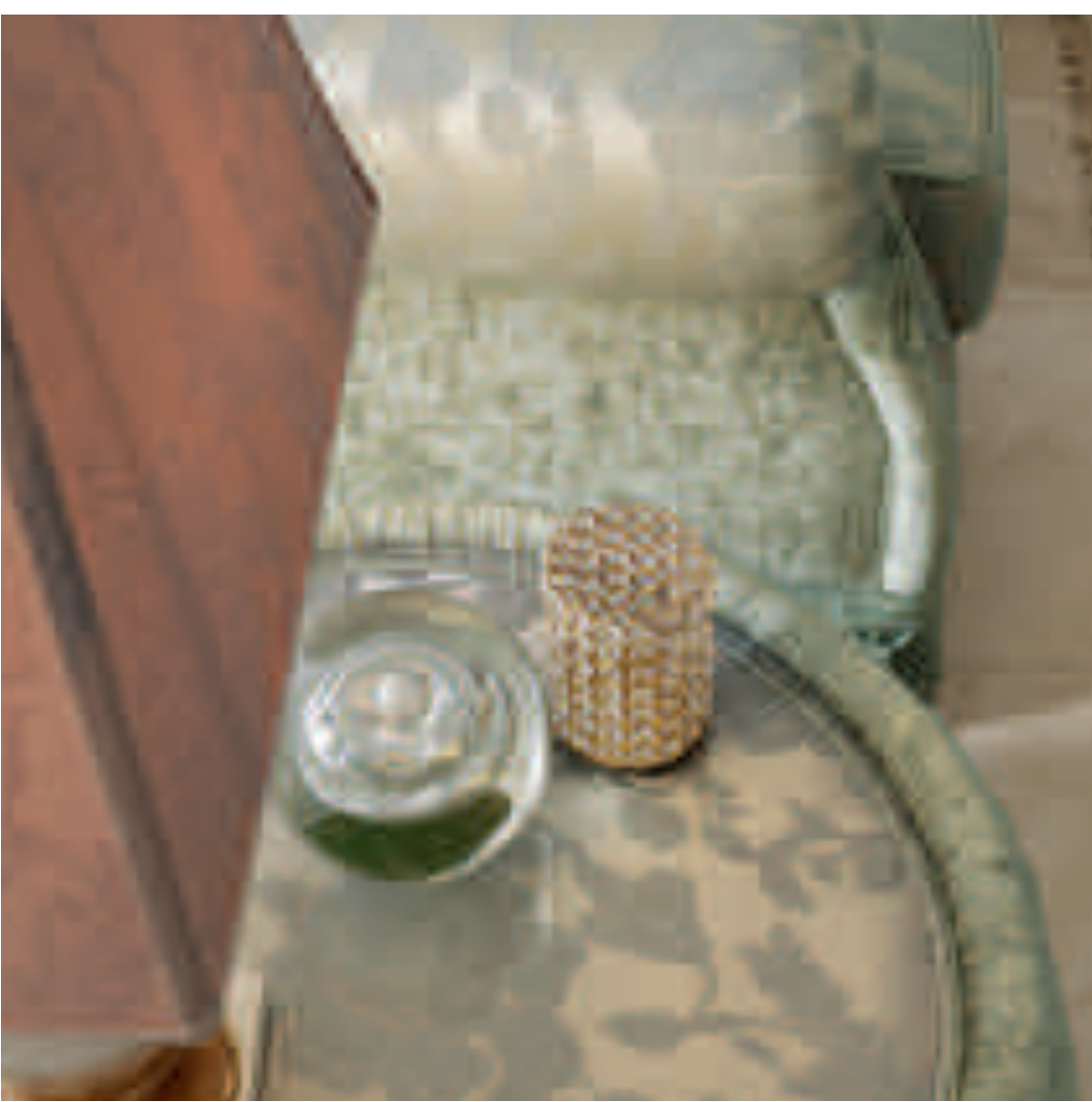
L. 84 P. 84 H. 43





Giorgiocasa®
di Mozzo

Il divano ad angolo è rivestito con tessuti e passamaneria di assoluto pregio. I tavolini rivestiti hanno il piano in vetro e completano elegantemente il salotto. Il pouff accostato al divano offre una comoda penisola.



The corner sofa is upholstered with fabrics and trimmings of pure fineness. The upholstered coffee tables have a glass top, gracefully completing the living room. The ottoman comes next to the sofa to form a convenient extension.

GIULIETTA E ROMEO



art. S110 K100-K101-K102

Composizione - Composition
L. 324/272 P. 109 H. 104

art. S117 K100 - K101

Tavolino rotondo - Small table
Ø 74 H. 44

art. S118 K100-K101

Pouff quadrato - Square pouf
L. 84 P. 84 H. 53

Noble furnishings

Arredi di pregio



art. S203 K106 - K107

Divano 3 posti - 3 seater sofa
L. 238 P. 100 H. 108

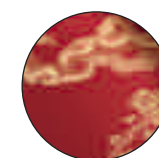
art. S206 K107

Tavolino - Small table
L. 114 P. 84 H. 38

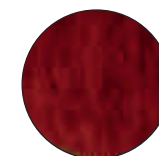
Giorgiocasa®
di Mozzo

Fabric Samples:

K106



K107



GIULIETTA
E ROMEO



art. S201 K106 - K107

Poltrona - Armchair
L. 129 P. 100 H. 102

art. S203 K106 - K107

Divano 3 posti - 3 seater sofa
L. 238 P. 100 H. 108

art. S206 K107

Tavolino - Small table
L. 114 P. 84 H. 38



art. S201 K106 - K107

Poltrona - Armchair

L. 129 P. 100 H. 102



Giorgiocasa®
di Mozzo

Il contrasto cromatico fra il rosso porpora del rivestimento e l'oro dei ricami dona una luce regale a questa soluzione. La base in legno presenta una accurata decorazione a foglia oro, eseguita a mano seguendo le più antiche tecniche artigianali.

The contrasting colors of the purple/red upholstery and the gold embroidery imbue the collection with a regal light. The wooden base's meticulous gold decoration was done by hand following age-old techniques.

GIULIETTA E ROMEO



Pure inspirations

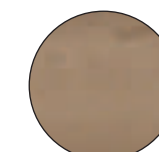
Candide suggerzioni

Fabric Samples:

K108



K109



K110



GIULIETTA
E ROMEO

art. S131 K108 - K109 - K110

Poltrona - Armchair
L. 113 P. 105 H. 103

art. S133 K108 - K109 - K110

Divano 3 posti - 3 seater sofa
L. 230 P. 106 H. 103





Giorgiocasa®
di Mozzo

Il lussuoso divano dal gusto classicheggiante si inserisce con armonia in ogni contesto d'arredo.

I tessuti del rivestimento assumono un aspetto cangiante grazie ai candidi damaschi e alla oculata scelta delle passamanerie.

The luxurious sofa with a classical edge fits effortlessly with any furnishing decor.

The upholstery fabric is rendered iridescent with light-colored damasks and deftly chosen trimmings.

GIULIETTA E ROMEO



The home of fine taste

Spazio al buon gusto

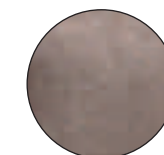
art. S141 K103 - K104 - K105

Poltrona - Armchair
L. 105 P. 102 H. 97

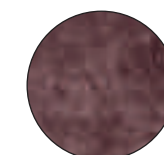
Giorgiocasa[®]
di Mozzo

Fabric Samples:

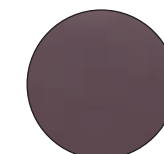
K103



K104



K105



GIULIETTA
E ROMEO

art. S143 K103 - K104 - K105

Divano 3 posti - 3 seater sofa
L. 238 P. 102 H. 97

art. S141 K103 - K104 - K105

Poltrona - Armchair
L. 105 P. 102 H. 97

art. S146 K103 - K104

Tavolino - Small table
L. 115 P. 72 H. 35





Giorgiocasa®
di Mozzo

Il rivestimento del divano gioca sull'alternanza cromatica dei tessuti, arricchiti dal capitonné. Stessa soluzione anche per la poltrona e per il tavolino, che ripresenta la finitura sulla parte superiore, visibile grazie al piano in vetro trasparente.

The alternation of shades on the sofa's upholstery is enhanced by the deep-tufting effect. The detail is repeated on the armchair and coffee table, used on its top as well and made visible through a transparent glass top.



Da oltre 40 anni, Giorgio Casa porta avanti con passione una tradizione fatta di sola eccellenza. Arredi realizzati nella provincia di Verona, che traggono ispirazione dalla storia e dalla cultura della città scaligera, recando con sé i valori della più autentica manifattura italiana.

Giorgio Casa draws on 40 years of passionate dedication to a tradition of pure excellence. The furnishings are made in the Verona area, inspired by the history and culture of the city, true to the values of absolutely genuine Italian craftsmanship.





Giorgiocasa®
di Mozzo

Fabric Samples:

K118



K119



GIULIETTA
E ROMEO



Exclusive appeal

Fascino esclusivo

art. S193 K118 - K119

Divano 3 posti - 3 seater sofa

L. 238 P. 100 H. 108

art. S191 K118 - K119

Poltrona - Armchair

L. 129 P. 100 H. 102



art. S193 K118 - K119

Divano 3 posti - 3 seater sofa

L. 238 P. 100 H. 108



Giorgiocasa®
di Mozzo

Un divano dal gusto classico, caratterizzato dalla base in legno e dalla forma armoniosa dello schienale e dei braccioli. In abbinamento, la cuscineria in varie fogge è rivestita con tessuti e passamanerie di pregio.

This sofa in classical style features wooden base and the graceful lines of the backrest and armrests. A combination of matching cushions of different types is covered with fine fabrics and trimmings.

GIULIETTA E ROMEO



Giorgiocasa®
di Mozzo

Nel dettaglio, il rivestimento in velluto capitonné del bracciolo. Il cuscino della seduta presenta una texture damascata, creando il tipico effetto lucido-opaco con disegni di natura floreale. La base in legno è rifinita in foglia argento.

Detail: deep-tufted velvet upholstery on the armrest. The chair cushion has a damask pattern with its distinctive glossy-matte effect forming floral motifs. The wooden base is finished in silver leaf.

GIULIETTA E ROMEO

art. S191 K118 - K119

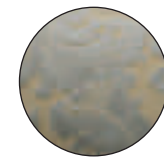
Poltrona - Armchair
L. 129 P. 100 H. 102



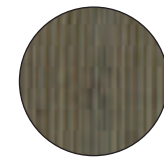
Giorgiocasa®
di Mozzo

Fabric Samples:

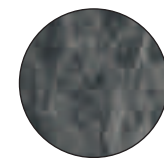
K120



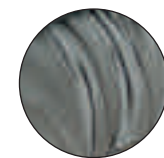
K121



K122



K123



GIULIETTA
E ROMEO

Sophisticated hues

Ricercate cromie

art. S121 K120 - K121 - K122 - K123

Poltrona - Armchair
L. 146 P. 100 H. 93

art. S122 K120 - K121 - K122 - K123

Divano 2 posti - 2 seater sofa

L. 231 P. 100 H. 100

art. S121 K120 - K121 - K122 - K123

Poltrona - Armchair

L. 146 P. 100 H. 93





Giorgiocasa®
di Mozzo

Il salotto presenta in un delicato gioco cromatico sui toni del celeste e dell'oro, in cui prevale l'alternanza fra trame con disegni lineari o floreali. Nel dettaglio, la particolare forma del bracciolo, che si apre verso l'esterno mostrando l'assoluta eleganza del tessuto broccato.

The living room shows the subtle color effects of light blue and gold, and the salient feature is the alternation between linear and floral patterns.

Detail: the unique shape of the armrest, which opens outwards, displaying the brocade fabric's pure elegance.

GIULIETTA E ROMEO



art. S122 K120 - K121 - K122 - K123

Divano 2 posti - 2 seater sofa

L. 231 P. 100 H. 100

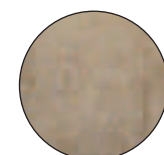
Giorgiocasa®
di Mozzo

Fabric Samples:

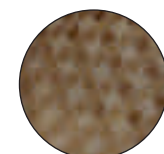
K111



K112



K113



GIULIETTA
E ROMEO

Superior craftsmanship

Alta maestria ebanistica

art. S173 K111 - K112 - K113

Divano 3 posti - 3 seater sofa
L. 251 P. 97 H. 105

art. S171 K111 - K112 - K113

Poltrona - Armchair
L. 135 P. 97 H. 100

Espressione di una romantica sensibilità che si ritrova nelle architetture della città scaligera, i divani Giorgio Casa incarnano contenuti di richiamo classico. La ricercatezza del design e l'eccellenza delle finiture li rendono ideali sia per l'arredo di ambienti in stile tradizionale che contemporaneo.

Giorgio Casa's sofas epitomize the romantic sensibility also seen in Verona's architecture. Their sophisticated design and excellent finishes make them perfect for both traditional and contemporary interiors.

A fresh eye on tradition

Reinterpretare la tradizione



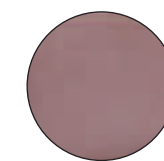
art. S212 K124 - K125

Divano 2 posti - 2 seater sofa
L. 210 P. 106 H. 102

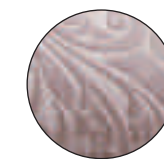
Giorgiocasa[®]
di Mozzo

Fabric Samples:

K124



K125



GIULIETTA
E ROMEO



art. S212 K124 - K125

art. S211 K124 - K125

Divano 2 posti - 2 seater sofa

Poltrona - Armchair

L. 210 P. 106 H. 102

L. 134 P. 106 H. 102



art. S211 K124 - K125

Poltrona - Armchair

L. 134 P. 106 H. 102



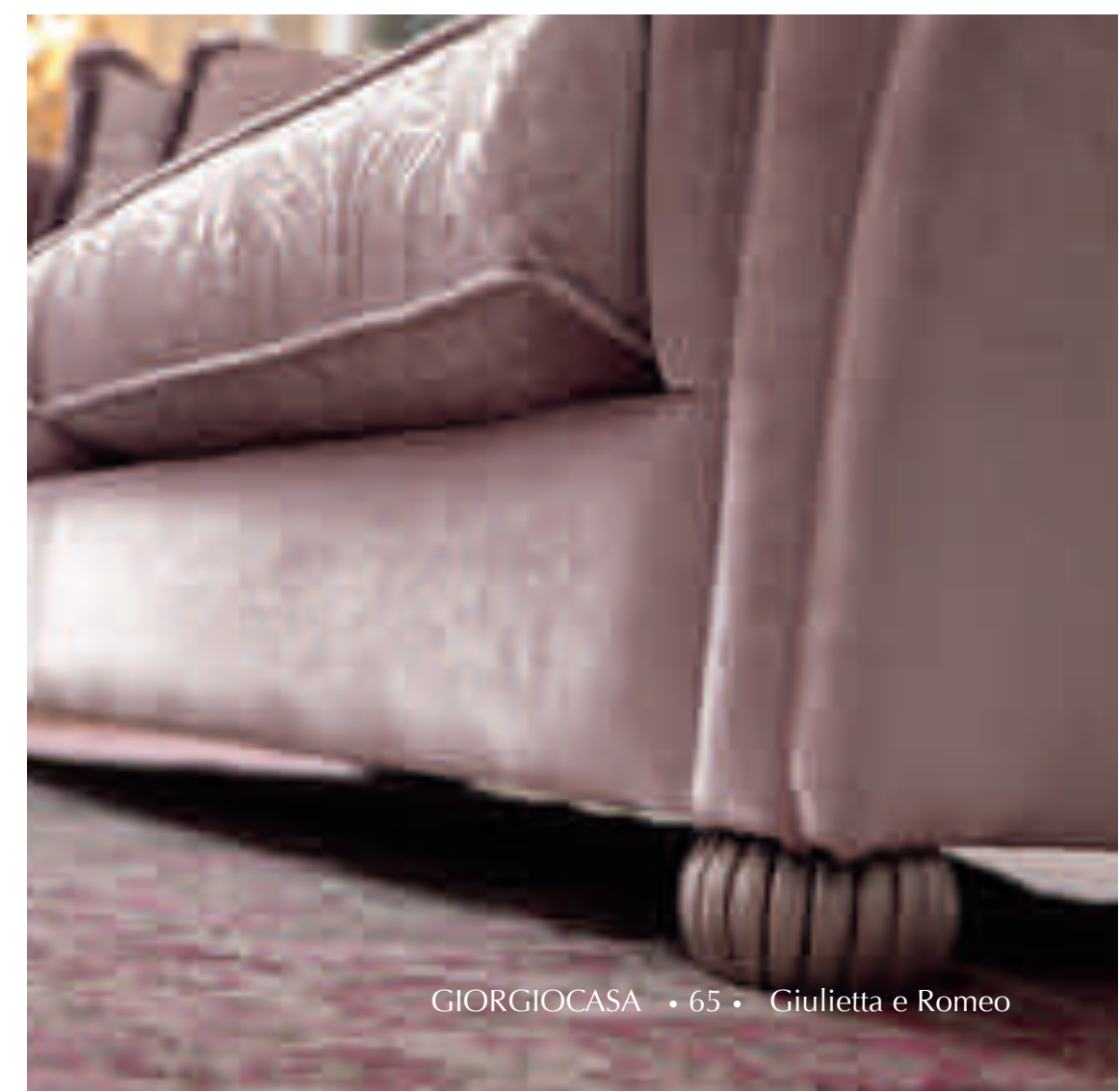
Giorgiocasa®
di Mozzo

La poltrona assume forme classiche, rivisitate in chiave contemporanea, che permette all'arredo di essere inserito in qualsiasi contesto abitativo. Lo schienale è composto da eleganti imbottiture a spicchi che ne addolciscono la sagoma fino ai braccioli.

The sofa's classical lines are reconsidered with a contemporary eye, letting it fit with ease in any kind of decor.

The backrest features elegant upholstery split in wedges and softening its contour to the armrests.

GIULIETTA E ROMEO



Formal elegance

Formale eleganza



art. S103 K126 - K127

Divano 3 posti - 3 seater sofa
L. 230 P. 106 H. 103

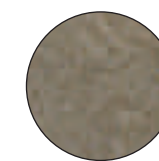
art. S101 K126 - K127

Poltrona - Armchair
L. 113 P. 106 H. 103



Fabric Samples:

K126



K127



GIULIETTA
E ROMEO





art. S103 K126 - K127

Divano 3 posti - 3 seater sofa
L. 230 P. 106 H. 103

art. S101 K126 - K127

Poltrona - Armchair
L. 113 P. 106 H. 103



Giorgiocasa®
di Mozzo

E' caratterizzato dall'abbinamento di tessuti a contrasto il divano di questa soluzione, che adotta la stessa finitura per la base ed i tre cuscini abbinati. L'uso ricercato della passamaneria ne completa il fascino, con nappe, frange e cordoni decorativi.

The sofa of this interior uses contrasting fabrics, featuring the same finish for the base and the three matching cushions. The sophisticated use of trimmings completes its allure, with decorative tassels, fringes and cords.

GIULIETTA E ROMEO



La piazza dei Signori nel medioevo ospitava la corte della Signoria degli Scaligeri. Come gli arredi della produzione Giorgio Casa, che sembrano fatti appositamente per gli edifici monumentali che la circondano, la piazza dei Signori è armoniosa, aristocratica, esclusiva.

In the Middle Ages, Piazza dei Signori was home to the court of the Signoria degli Scaligeri. Giorgio Casa's furnishings appear as if made to fit with the grandiose buildings around it in Piazza dei Signori, being just as harmonious, aristocratic and exclusive.

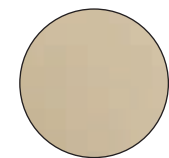




Giorgiocasa®
di Mozzo

Leather Sample:

K128



GIULIETTA
E ROMEO



Abiding charm

Fascino intramontabile

art. S223 K128 PELLE art. S221 K128 PELLE

Divano 3 posti - 3 seater sofa

Poltrona - Armchair

L. 220 P. 91 H. 71

L. 113 P. 91 H. 71





Giorgiocasa®
di Mozzo

Divani e poltrone in stile chesterfield realizzati in pelle pieno fiore di primissima scelta. L'assoluta eleganza e l'equilibrio formale che li contraddistingue pongono questi arredi fuori dal tempo e dalle mode del momento. Gli schienali sono arricchiti dalla raffinata finitura capitonné.

Chesterfield-style sofas and armchairs in superior full grain leather.

These furnishings are far beyond the whims of fashion, marked by pure elegance and balanced forms. The backrests feature refined deep-tufting.

GIULIETTA E ROMEO



art. S223 K128 PELLE

Divano 3 posti - 3 seater sofa
L. 220 P. 91 H. 71

art. S221 K128 PELLE

Poltrona - Armchair
L. 113 P. 91 H. 71

Giorgiocasa[®]
di Mozzo

Quality in every last detail

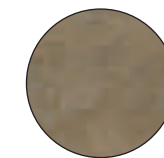
Qualità in ogni dettaglio

art. S232 K40

Divano 2 posti - 2 seater sofa
L. 120 P. 64 H. 76

Fabric Sample:

K40



GIULIETTA
E ROMEO



art. S232 K40

Divano 2 posti - 2 seater sofa
L. 120 P. 64 H. 76

art. S231 K40

Poltrona - Armchair
L. 67 P. 64 H. 76



Giorgiocasa®
di Mozzo

Una proposta snella e versatile, in cui il divanetto a due posti e le poltrone abbinata dipingono un quadro di assoluta eccellenza stilistica. Il tessuto floreale riveste le imbottiture della seduta e dello schienale, mentre la struttura che disegna la base e i braccioli si sviluppa in un movimento morbido e ondulato.

This sleek, versatile interior with matching two-seater sofa and armchairs is a portrait of pure style excellence.

The floral textiles cover the padded seat and backrest, and the frame shaping the base and armrests create a gentle, undulating sense of movement.

GIULIETTA E ROMEO



art. S231 K40

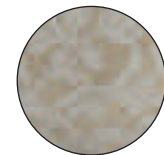
Poltrona - Armchair
L. 67 P. 64 H. 76



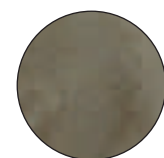
Giorgiocasa®
di Mozzo

Fabric Samples:

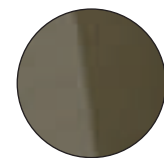
K129



K130



K131



GIULIETTA
E ROMEO



Balanced forms

Equilibrio delle forme

art. S241 K129 - K130 - K131

Poltrona - Armchair
L. 116 P. 100 H. 98

art. S243 K129 - K130 - K131

Divano 3 posti - 3 seater sofa
L. 230 P. 100 H. 98



Un divano dal fascino antico ed esclusivo, dove la cuscineria ne completa l'appeal grazie al rivestimento in tessuto cangiante. Il velluto utilizzato per i braccioli si alterna al damascato di sedute, cuscini e base, completato da una frangia distribuita sull'intera base.

Exclusive, antique appeal for a sofa with iridescent cushions rounding out its allure. The velvet used for the armrests alternates with damask for the chairs, cushions and base, completed by a fringe around the entire base.





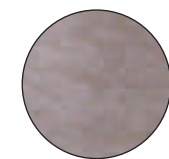
Giorgiocasa®
di Mozzo

Fabric Samples:

K82



K117



GIULIETTA
E ROMEO



art. S163 K82 - K117

Divano 3 posti - 3 seater sofa
L. 239 P. 102 H. 102

Harmonious furnishings

Armonie di arredi

art. S161 K82 - K117

Poltrona - Armchair
L. 124 P. 102 H. 99

art. S163 K82 - K117

Divano 3 posti - 3 seater sofa
L. 239 P. 102 H. 102





Giorgiocasa®
di Mozzo

Poltrone e sofà esprimono un design che privilegia forme morbide e sinuose, in cui lo stile classico ritorna ad essere ancora più attuale con nuove vesti. I dettagli evidenziano il pregio della lavorazione artigianale made in Italy.

Armchairs and sofas embody a design favoring soft, curving lines, bringing a classical style up to date in new guises. The details express the fineness of Italian craftsmanship.

GIULIETTA E ROMEO



“Amore è un fumo levato col fiato dei sospiri; purgato, è fuoco scintillante negli occhi degli amanti; turbato, un mare alimentato dalle loro lacrime. Che altro è esso? Una follia discreta quanto mai, fiele che strangola e dolcezza che sana.” (Romeo e Giulietta: atto I, scena I)

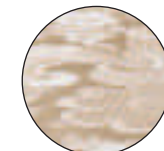
“Love is a smoke raised with the fume of sighs; being purged, a fire sparkling in lovers' eyes; being vexed, a sea nourished with loving tears. What is it else? A madness most discreet, A choking gall, and a preserving sweet.” (Romeo and Juliet: Act I, Scene I)



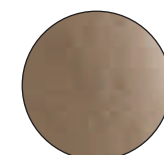
Giorgiocasa®
di Mozzo

Fabric Samples:

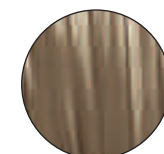
K132



K119



K133



GIULIETTA
E ROMEO

Research and design

Ricerca e design

art. S253 K132 - K119 - K133

Divano 3 posti - 3 seater sofa
L. 230 P. 97 H. 91

art. S253 K132 - K119 - K133

Divano 3 posti - 3 seater sofa

L. 230 P. 97 H. 91

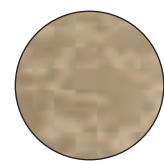




Giorgiocasa®
di Mozzo

Fabric Samples:

K144



K145



GIULIETTA
E ROMEO



art. S261 K144 - K145

Poltrona - Armchair
L. 113 P. 90 H. 98

Total quality

Qualità totale

art. S262 K144 - K145

Divano 2 posti - 2 seater sofa

L. 188 P. 90 H. 98

art. S261 K144 - K145

Poltrona - Armchair

L. 113 P. 90 H. 98



art. S262 K144 - K145

Divano 2 posti - 2 seater sofa

L. 188 P. 90 H. 98



Giorgiocasa®
di Mozzo

Il divanetto a due posti si esprime in un design ricercato, in cui l'eleganza stilistica si manifesta in ogni singolo dettaglio. È il caso dello schienale dalla forma arrotondata, dal rivestimento floreale e dalla struttura in legno, caratterizzata dalle lavorazioni artigianali dell'intaglio traforato.

The two-seater sofa conveys a sophisticated design in which elegant style is expressed in every last detail — the rounded backrest, floral upholstery and wooden frame with exquisitely crafted openwork carving.

GIULIETTA E ROMEO



Sophistication and elegance

Ricerca ed eleganza

Giorgiocasa®
di Mozzo

Fabric Samples:

K146



K147



GIULIETTA
E ROMEO

art. S271 K146 - K147

Poltrona - Armchair
L. 97 - P. 84 - H. 89

art. S278 K146 - K147

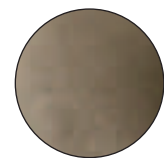
Pouff - Pouf
L. 86 - P. 62 - H. 43



Giorgiocasa®
di Mozzo

Fabric Samples:

K151



GIULIETTA
E ROMEO



The seduction of luxury

Lussuose seduzioni

art. S291 K151

Poltrona - Armchair
L. 88 P. 91 H. 117

art. S291 K151

Poltrona - Armchair

L. 88 P. 91 H. 117

art. S283 K148 - K149 - K150

Divano 3 posti - 3 seater sofa

L. 223 P. 97 H. 94

Fabric Samples:

K148



K149



K150



GIULIETTA
E ROMEO



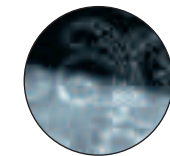
Giorgiocasa®
di Mozzo

La poltrona ha un carattere deciso e forme ricercate. Il rivestimento dai toni blu, impreziosito dai ricami floreali dal pregio dei tessuti in velluto, contribuisce a rendere esclusivo questo articolo della collezione.

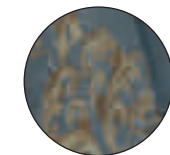
The armchair has a distinctive personality and refined lines. This piece is made unique by the upholstery in shades of blue embellished by floral embroidery and the fine velvet fabric.

Fabric Samples:

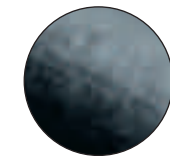
K152



K153



K154



GIULIETTA E ROMEO

art. S301 K152 - K153 - K154

Poltrona - Armchair
L. 85 P. 83 H. 110



Le linee e i contenuti di richiamo classico delle collezioni Giorgio Casa riflettono il prestigio e l'importanza della città di Verona, che dal medioevo ha intrapreso una crescita continua grazie al ruolo della famiglia Della Scala. Arredi concepiti per confermare nel tempo la loro validità e al contempo evocare attualità e tendenza.

The Giorgio Casa collections' classical lines and details mirror Verona's prestige and importance, which flourished from the Middle Ages on under the Della Scala family's influence. These furnishings were designed to both confirm their time-tested quality and evoke current styles.

Superior craftsmanship

Maestria artigianale

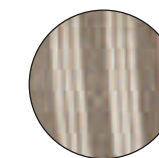
Giorgiocasa[®]
di Mozzo

Fabric Samples:

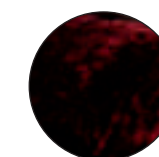
K181



K182



K107



art. S153 K181 - K182 - K107 art. S151 K181 - K182

Divano 3 posti - 3 seater sofa
L. 228 P. 100 H. 103

Poltrona - Armchair
L. 111 P. 100 H. 96

GIULIETTA
E ROMEO

Details that dazzle

Particolari che emozionano

Giorgiocasa®
di Mozzo

Fabric Samples:

K160



GIULIETTA
E ROMEO

art. S311 K160

Poltrona - Armchair

L. 68 P. 63 H. 98



art. S311 K160

Poltrona - Armchair
L. 68 P. 63 H. 98

art. S312 K160

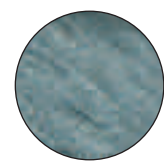
Divano 2 posti - 2 seater sofa
L. 130 P. 63 H. 98



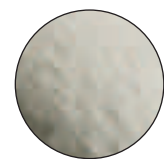
Giorgiocasa®
di Mozzo

Fabric Samples:

K156



K157



GIULIETTA
E ROMEO



Authentic Italian-made quality

Autentico made in Italy

art. S323 K156 - K157

art. S321 K156 - K157

Divano 3 posti - 3 seater sofa

Poltrona - Armchair

L. 236 P. 98 H. 93

L. 106 P. 98 H. 93



art. S323 K156 - K157

Divano 3 posti - 3 seater sofa

L. 236 P. 98 H. 93



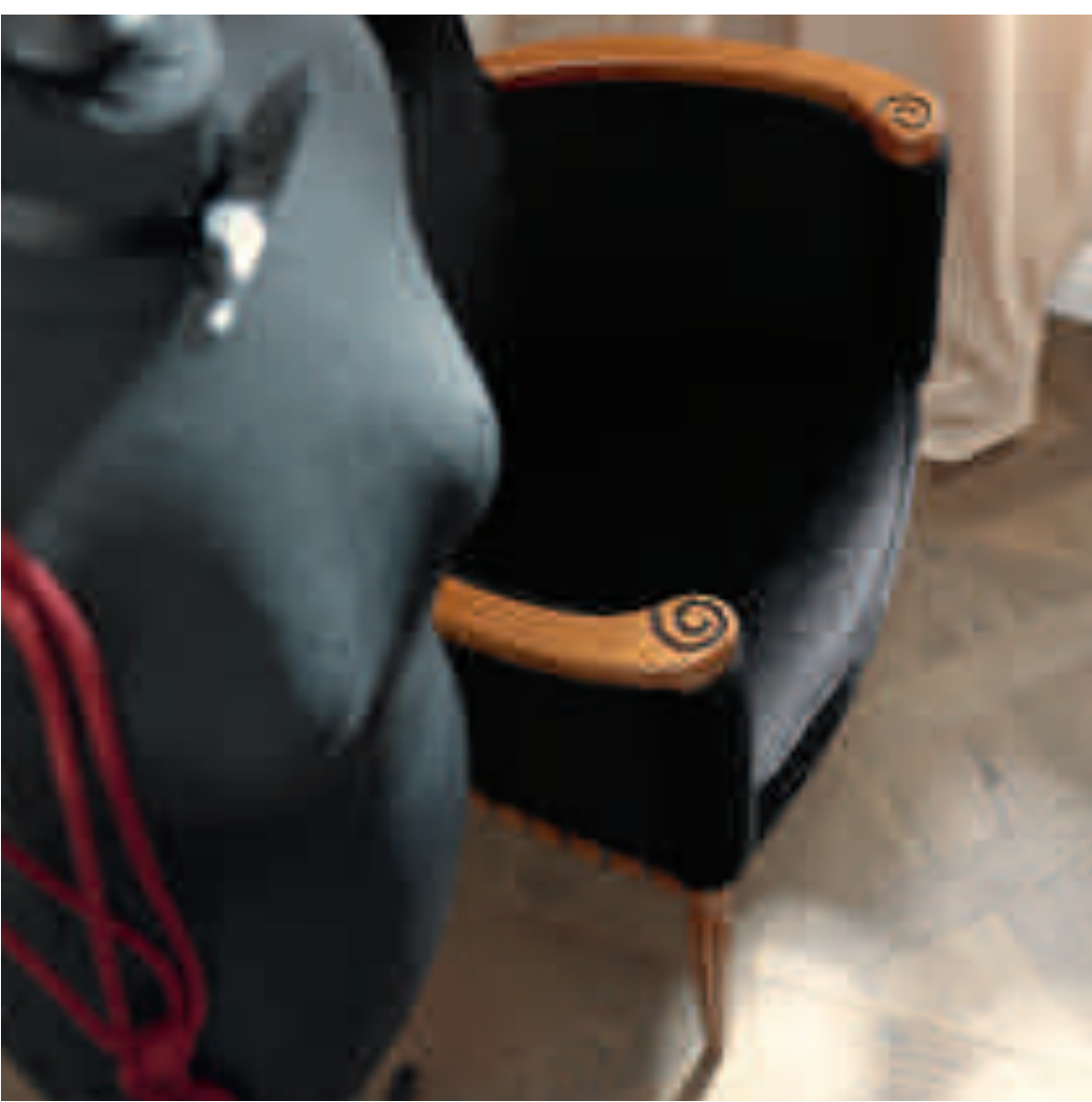
Giorgiocasa®
di Mozzo

Una soluzione dal piglio contemporaneo, in cui le forme classicheggianti si aprono verso direzioni minimal, senza rinunciare allo stile che caratterizza la collezione. Il divano e le poltrone, impreziosite dalle impunture capitonné dello schienale, poggiano su piedi finemente intagliati.

An interior with a contemporary bent, classical forms in minimalist directions, always staying true to the collection's style. The sofa and armchairs — featuring deep-tufting on the backrest — stand on exquisitely carved feet.

GIULIETTA E ROMEO



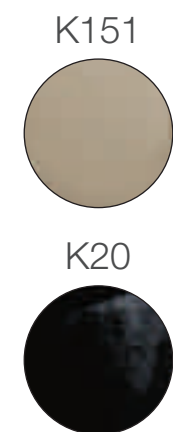


Giorgiocasa®
di Mozzo

Una scelta decisa per le due deliziose poltrone dalla elegante struttura in legno massello, finemente lavorata. L'accoppiata permette di giocare sui toni black&white per comporre un ambiente dal fascino contemporaneo.

A powerful choice for these two delightful armchairs with solid wood, finely crafted frames. The combination plays with black and white hues for an interior with contemporary appeal.

Fabric Samples:



GIULIETTA E ROMEO



art. S331 K20

Poltrona - Armchair
L. 66 P. 55 H. 83

art. S331 K151

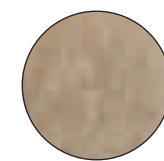
Poltrona - Armchair
L. 66 P. 55 H. 83



Giorgiocasa®
di Mozzo

Fabric Samples:

K134



K135



GIULIETTA
E ROMEO



New icon

Nuove icone

art. S363 K134-K135

art. S361 K134-K135

Divano 3 posti - 3 seater sofa

Poltrona - Armchair

L. 248 P. 103 H. 98

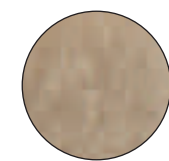
L. 120 P. 103 H. 98



Giorgiocasa®
di Mozzo

Fabric Samples:

K134



K135



GIULIETTA
E ROMEO

Classically modern

Classica attualità

art. S371 K134 - K135

Poltrona - Armchair
L. 130 P. 103 H. 97

art. S373 K134 - K135

Divano 3 posti - 3 seater sofa
L. 246 P. 103 H. 97





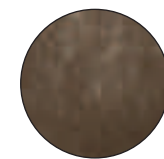
Giorgiocasa®
di Mozzo

Fabric Samples:

K136



K137



GIULIETTA
E ROMEO



Comfort eand design

Comfort e design

art. S382 K136 - K137

Divano 3 posti - 3 seater sofa
L. 210 P. 97 H. 97

art. S381 K136 - K137

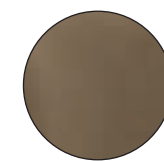
Poltrona - Armchair
L. 123 P. 97 H. 97



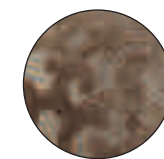
Giorgiocasa®
di Mozzo

Fabric Samples:

K151



K180



GIULIETTA
E ROMEO

Classical style in a new light

Rivisitare il classico

art. S342 K151 - K180

Divano - Sofa
L. 143 P. 91 H. 102



art. S341 K151 - K180

Poltrona - Armchair
L. 87 P. 91 H. 102

art. S342 K151 - K180

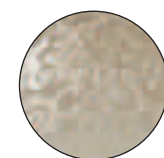
Divano - Sofa
L. 143 P. 91 H. 102



Giorgiocasa®
di Mozzo

Fabric Samples:

K90



K45



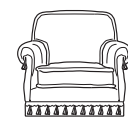
GIULIETTA
E ROMEO



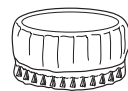
art. S353 K90 - K45

Divano - Sofa

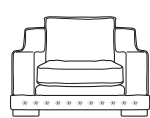
L. 215 P. 92 H. 114



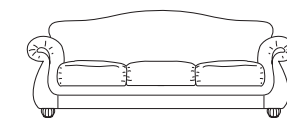
S101
L. 113 P. 106 H. 103
PAG 69



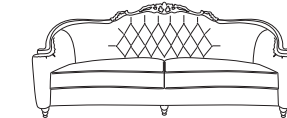
S117
Ø 74 H. 44
PAG 18



S141
L. 105 P. 102 H. 97
PAG 32



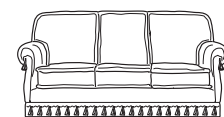
S163
L. 239 P. 102 H. 102
PAG 95



S183
L. 258 P. 105 H. 107
PAG 6



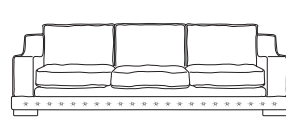
P3X
Ø 48
PAG 42



S103
L. 230 P. 106 H. 103
PAG 66



S118
L. 84 P. 84 H. 53
PAG 19



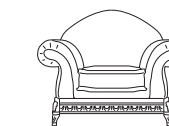
S143
L. 238 P. 102 H. 97
PAG 34



P1A
L. 50 H. 50
PAG 95



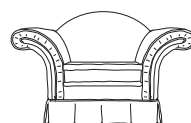
P1B
L. 50 H. 50
PAG 6



S201
L. 129 P. 100 H. 102
PAG 24



P2B-H
L. 55 H. 35
PAG 66



S121
L. 146 P. 100 H. 93
PAG 49



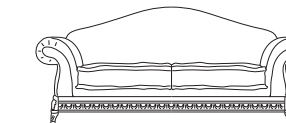
P1A
L. 50 H. 50
PAG 34



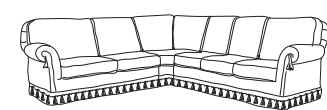
P3X
Ø 48
PAG 95



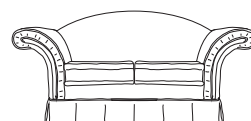
P2A
L. 55 H. 35
PAG 6



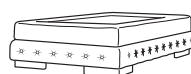
S203
L. 238 P. 100 H. 108
PAG 20



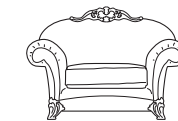
S110
L. 336/288 P. 109 H. 104
PAG 16



S122
L. 231 P. 100 H. 100
PAG 50



S146
L. 115 P. 72 H. 35
PAG 35



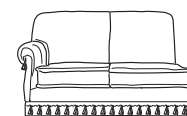
S171
L. 135 P. 97 H. 100
PAG 56



S185
L. 66 P. 66 H. 42
PAG 9



P1B
L. 50 H. 50
PAG 20



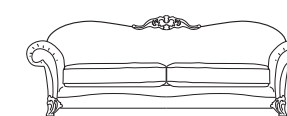
S110-2 SX
L. 170 P. 106 H. 103
PAG 16



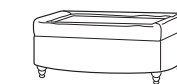
P1B
L. 50 H. 50
PAG 50



S151
L. 111 P. 100 H. 96
PAG 121



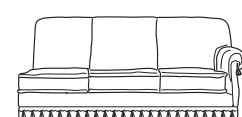
S173
L. 251 P. 97 H. 105
PAG 57



S186
L. 110 P. 67 H. 42
PAG 7



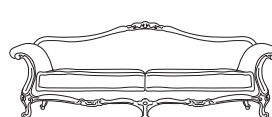
P1C
L. 50 H. 50
PAG 20



S110-3 DX
L. 218 P. 106 H. 103
PAG 16



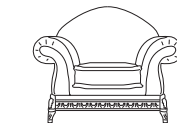
P2A
L. 55 H. 35
PAG 50



S153
L. 228 P. 100 H. 103
PAG 120



P1A
L. 50 H. 50
PAG 57



S191
L. 129 P. 100 H. 102
PAG 47



P3X
Ø 48
PAG 20



S110 Ang
L. 118 P. 118 H. 103
PAG 17



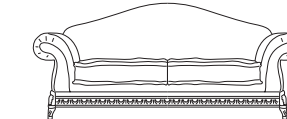
S131
L. 113 P. 105 H. 103
PAG 28



P1B
L. 50 H. 50
PAG 120



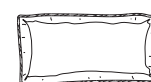
P1B
L. 50 H. 50
PAG 57



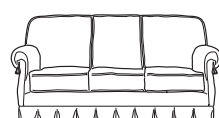
S193
L. 238 P. 100 H. 108
PAG 44



S206
L. 114 P. 84 H. 38
PAG 23



P2A
L. 55 H. 35
PAG 17



S133
L. 230 P. 106 H. 103
PAG 29



P3X
Ø 48
PAG 120



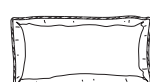
S181
L. 107 P. 105 H. 98
PAG 9



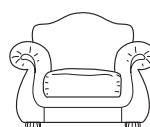
P1B
L. 50 H. 50
PAG 42



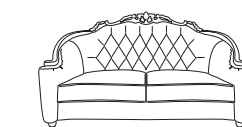
S115
L. 84 P. 84 H. 43
PAG 16



P2A
L. 55 H. 35
PAG 29



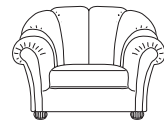
S161
L. 124 P. 102 H. 99
PAG 94



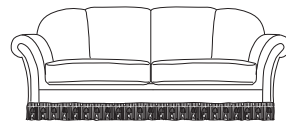
S182
L. 195 P. 105 H. 107
PAG 4



P1C
L. 50 H. 50
PAG 42



S211
L. 134 P. 106 H. 102
PAG 64



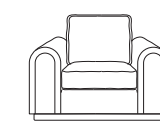
S243
L. 230 P. 100 H. 98
PAG 89



S271
L. 97 P. 84 H. 89
PAG 111



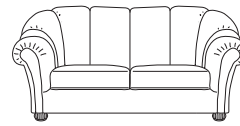
S321
L. 106 P. 98 H. 93
PAG 129



S361
L. 120 P. 103 H. 98
PAG 136



P1B
L. 50 H. 50
PAG 144



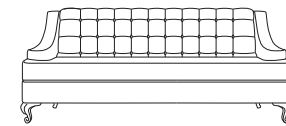
S212
L. 210 P. 106 H. 102
PAG 62



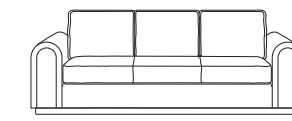
P1A
L. 50 H. 50
PAG 88



S278
L. 86 P. 62 H. 43
PAG 111



S323
L. 236 P. 98 H. 93
PAG 128



S363
L. 248 P. 103 H. 98
PAG 137



P3X
Ø 48
PAG 144



P1B
L. 50 H. 50
PAG 62



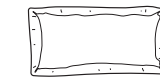
P1B
L. 50 H. 50
PAG 89



P2A
L. 55 H. 35
PAG 111



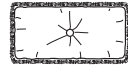
P1A
L. 50 H. 50
PAG 128



P2X
L. 55 H. 35
PAG 137



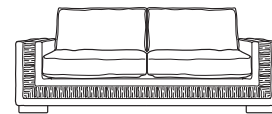
600
Ø 60 H. 70
PAG 139



P2B
L. 55 H. 35
PAG 62



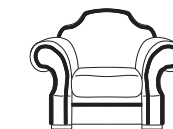
P1C
L. 50 H. 50
PAG 89



S283
L. 223 P. 97 H. 94
PAG 115



S331
L. 66 P. 55 H. 83
PAG 133



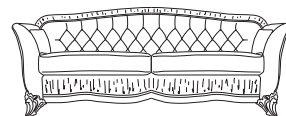
S371
L. 130 P. 103 H. 97
PAG 140



601
Ø 60 H. 70
PAG 137



S221
L. 113 P. 91 H. 71
PAG 76



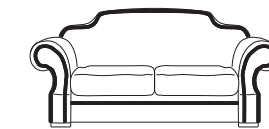
S253
L. 230 P. 97 H. 91
PAG 103



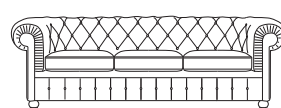
P1B
L. 50 H. 50
PAG 115



S341
L. 87 P. 91 H. 102
PAG 148



S373
L. 246 P. 103 H. 97
PAG 141



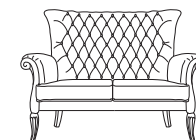
S223
L. 220 P. 91 H. 71
PAG 77



P1B
L. 50 H. 50
PAG 103



S291
L. 88 P. 91 H. 117
PAG 114



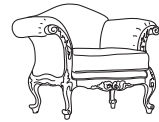
S342
L. 143 P. 91 H. 102
PAG 147



P1A
L. 50 H. 50
PAG 141



S231
L. 67 P. 64 H. 76
PAG 85



S261
L. 113 P. 90 H. 98
PAG 105



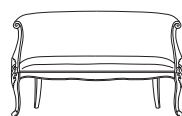
S301
L. 85 P. 83 H. 110
PAG 117



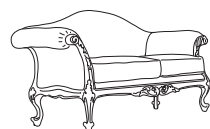
P1A
L. 50 H. 50
PAG 147



P1A-W
L. 50 H. 50
PAG 141



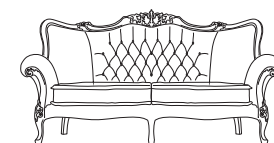
S232
L. 120 P. 64 H. 76
PAG 83



S262
L. 188 P. 90 H. 98
PAG 106



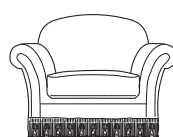
S311
L. 68 P. 63 H. 98
PAG 123



S353
L. 215 P. 92 H. 114
PAG 151



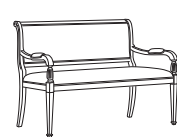
S381
L. 123 P. 97 H. 97
PAG 145



S241
L. 116 P. 100 H. 98
PAG 88



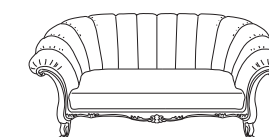
P1B
L. 50 H. 50
PAG 106



S312
L. 130 P. 63 H. 98
PAG 125



P1X
L. 50 H. 50
PAG 151



S382
L. 210 P. 97 H. 97
PAG 144

Giorgiocasa®
di Mozzo

Si Ringrazia:



Badia a Settimo - Scandicci (FI) +39 055 7310687 - www.eurolampart.it

illuminazione



Capraia e Limite (FI) +39 0571 583861 - www.mariocioni.com

oggettistica



Verona +39 045 8008885 - originisrl@tiscalinet.it

tappeti



Vicenza +39 0424 590106 - www.ahura.it

ceramiche

art direction: Kinetix.it
Photo: Lorenzo Borgianni
set styling: Cristina Bernacchi
prepress: Maistri Fotolito
print: Grafiche Antiga



A photograph of a courtyard with a brick building, a statue, and foliage. The building features a large arched doorway on the left and a smaller arched window on the right. A statue of a woman stands in the foreground on the right. The courtyard is paved with brick and has a central area of light-colored plaster. Green leaves are visible in the upper and right portions of the frame.

www.giorgiocasa.it

